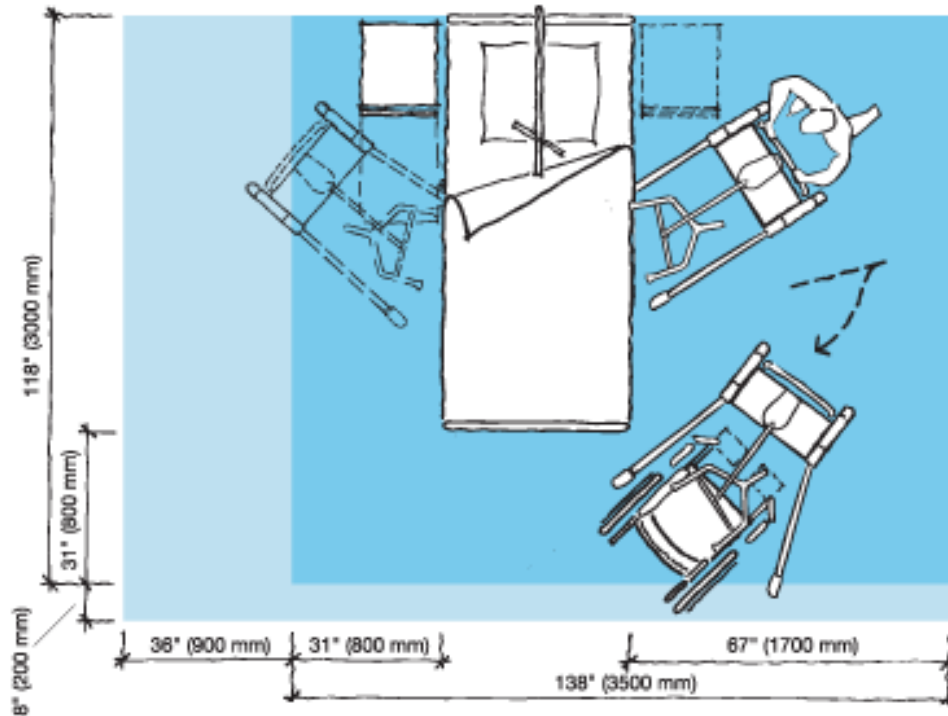
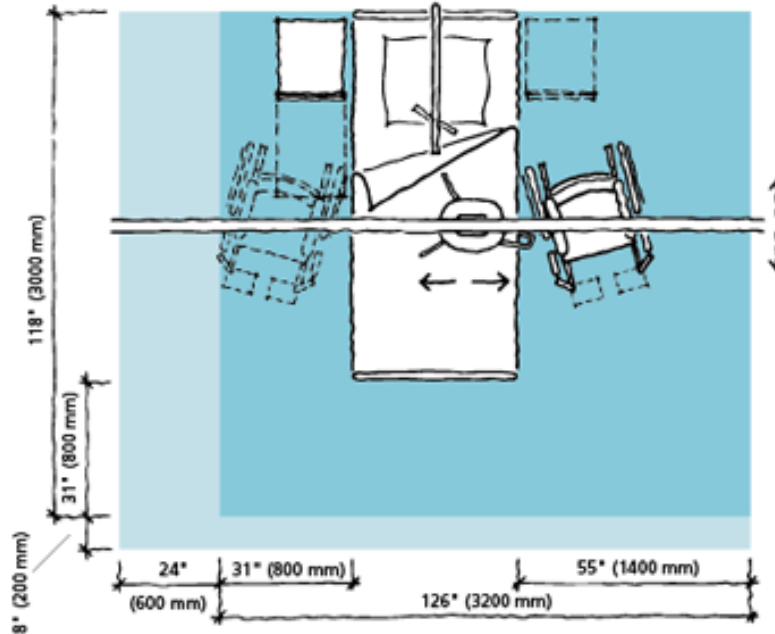


**Figure 1:** Space requirements for transfers between bed and wheelchair with a sit-stand or total mechanical sling lift (ARJO Canada Inc., 2005)



The dark shaded area indicates minimum allotted space required. The light shaded area (plus dark area) indicates recommended extension of the working area to facilitate activities from either side and to provide adequate access for the patient, mechanical device and assisting caregiver. These recommendations do not include the provision of space for furniture and other personal items.

Figure 2: Space requirements for transfers between bed and wheelchair with an over-head lift (ARJO Canada Inc., 2005).



The dark shaded area indicates minimum allotted space required. The light shaded area (plus dark area) indicates recommended extension of the working area to facilitate activities from either side and to provide adequate access for the patient, mechanical device and assisting caregiver. These recommendations do not include the provision of space for furniture and other personal items.

## References

ARJO Canada Inc. (2006). "Bariatrics Space Requirements", available on the World Wide Web at the following address:

<http://www.arjo.com/ca/Page.asp?PageNumber=1021>

Accessed April 13, 2015

ARJO Hospital Equipment AB (2005). ARJO Guidebook for Architects and Planners: Elderly Care Facilities, 2nd Ed., Eslov, Sweden