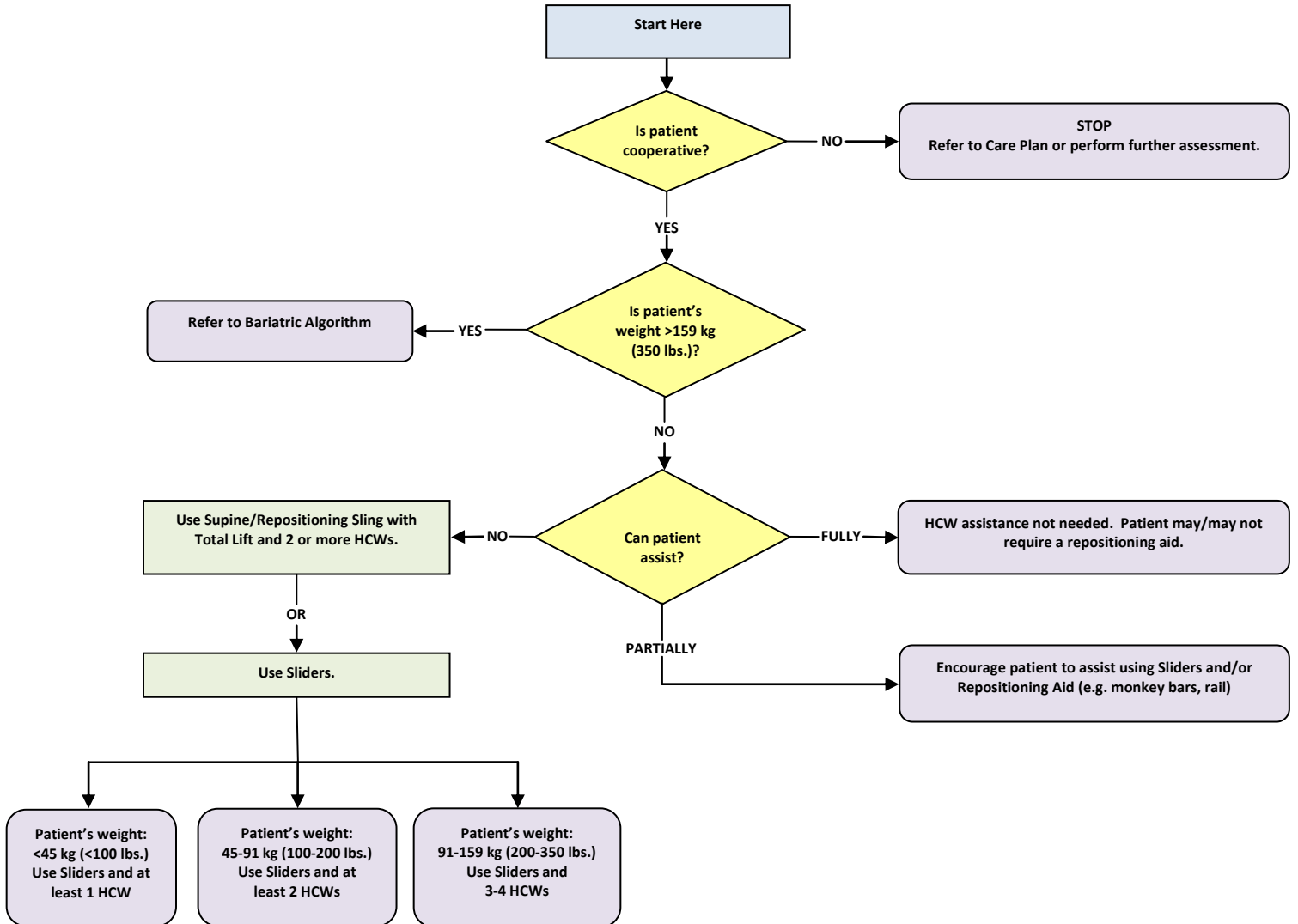
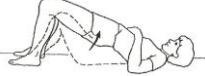





Algorithm: Bed Repositioning



Assessment Actions
Patient attempts to roll from side to side in bed
Patient attempts to move legs over one at a time in the direction of the desired movement
Patient attempts to lift one or both hips off the bed (bridge position) 
Patient attempts to straighten a bent elbow against your resistance. 

SWPs: Bed Reposition/Turn with Ceiling Lift and Repositioning Sling

Bed Reposition/Turn with Sliders

Bed Reposition with Orange Slider