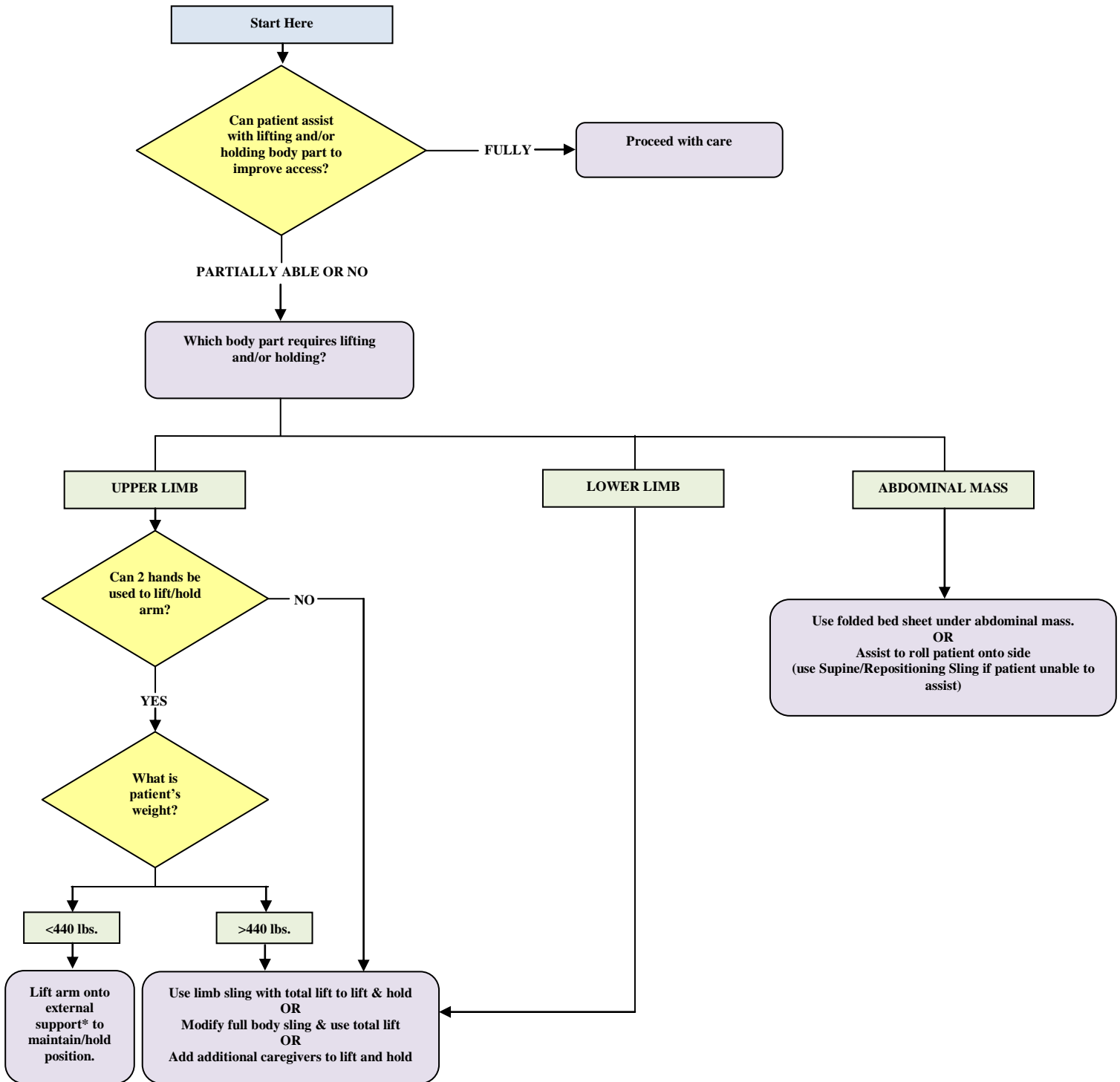



## Bariatric Algorithm Patient Handling Tasks Requiring Access to Body Parts (Limb, Abdominal Mass, Gluteal Area)



- Assemble multidisciplinary team to problem solve and develop creative solutions that are safe for patient and caregiver.
- \*External supports could include sealed high density foam rolls/wedges, arm boards, height adjustable foot stools, etc.
- Source: Waters, T.R., Sedlak, C.A., Howe, C.M., Gonzales, C.M., Doheny, M.D., Patterson, M. & Nelson, A. (2009). Recommended weight limits for lifting & holding limbs in the orthopaedic practice setting. Orthopaedic Nursing, 28(25):528-532.

<b>Assessment Actions</b>
Patient attempts to roll from side to side in bed
Patient attempts to move legs over one at a time in the direction of the desired movement
Patient attempts to lift one or both hips off the bed (bridge position)



SWPs: Limb Sling with Total Lift (Ceiling or Floor Based)  
Pannus Sling Options  
Bed Turns with Repositioning Sling