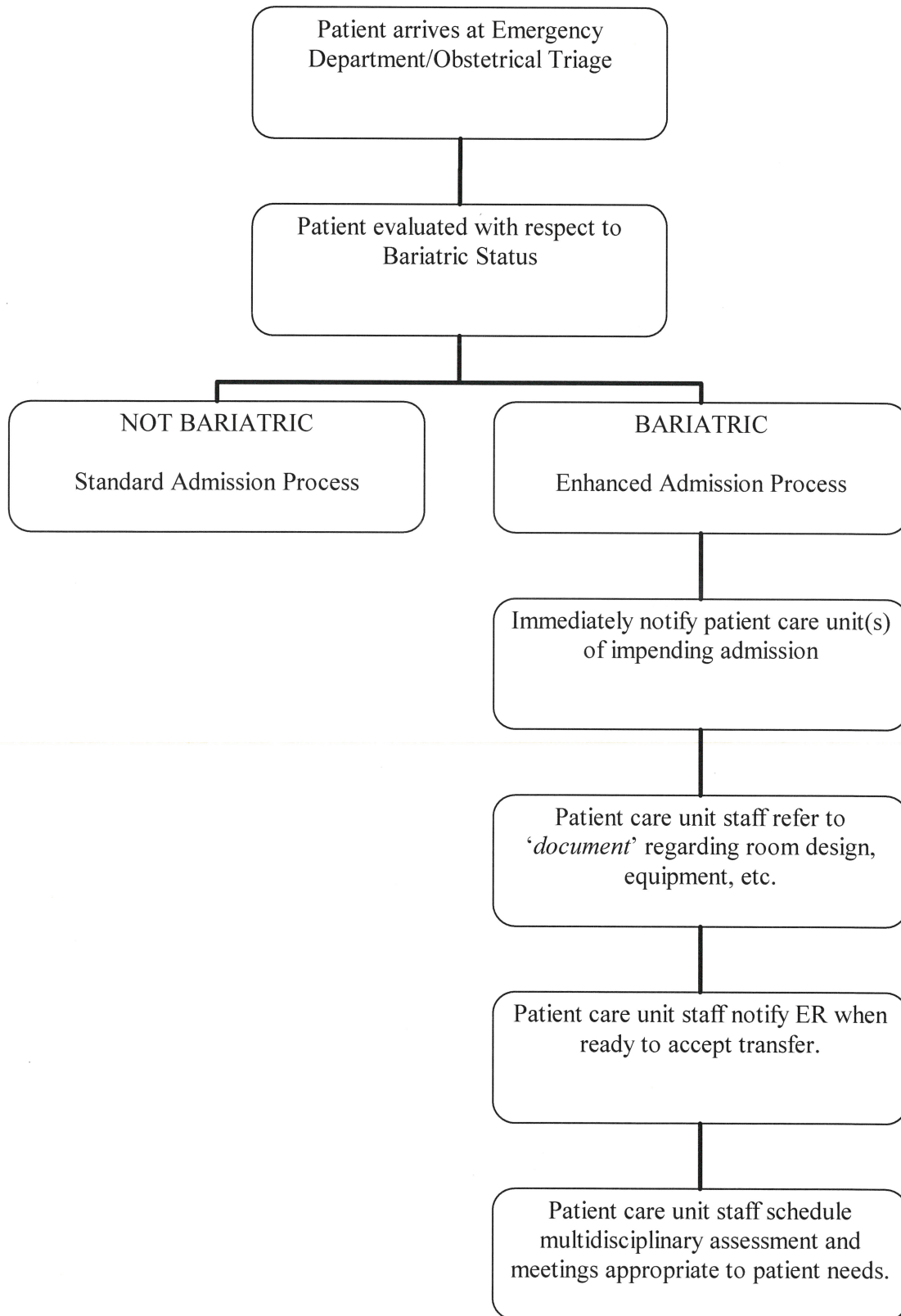
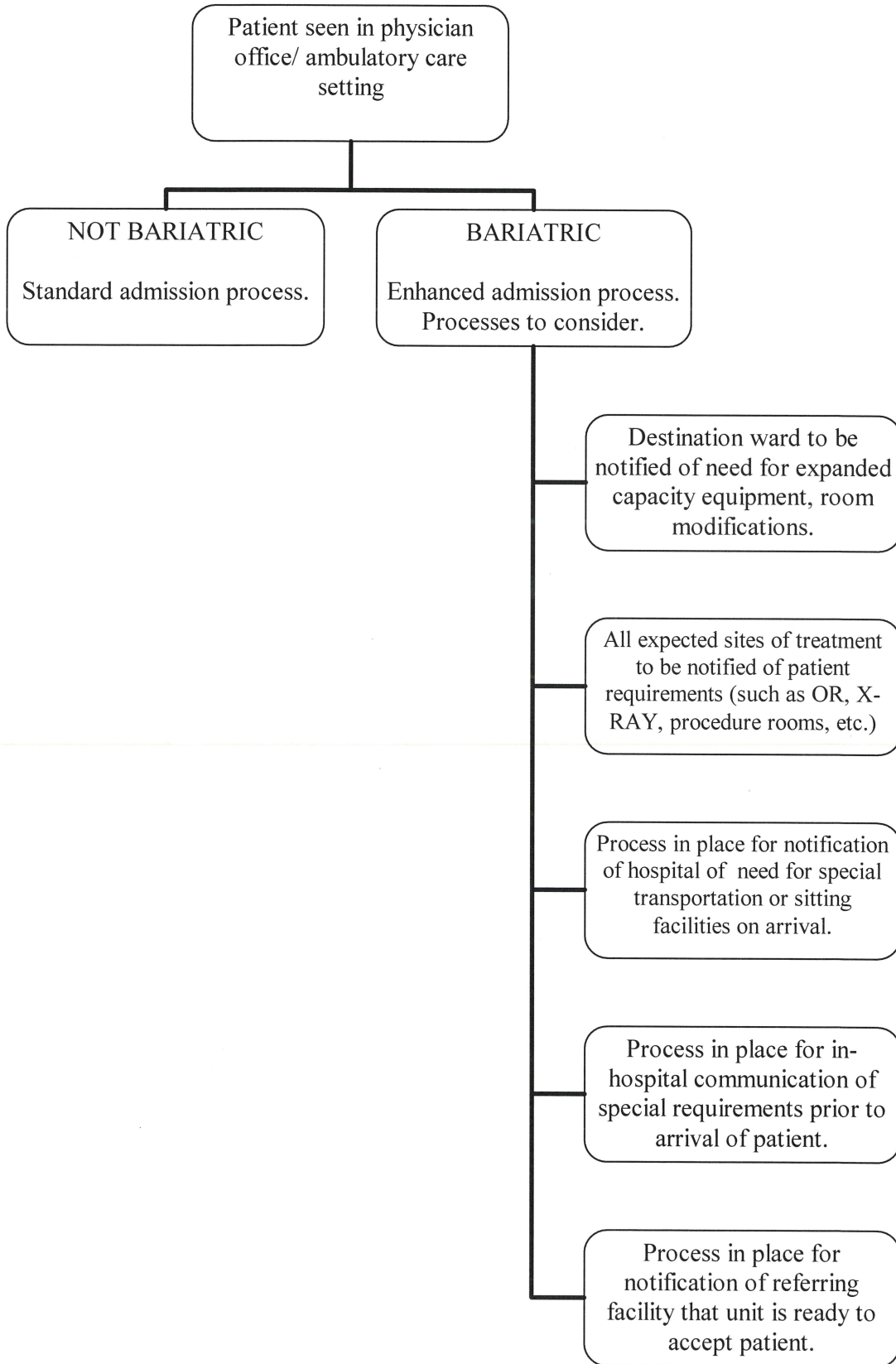


## BARIATRIC PATIENT EMERGENCY ADMISSION FLOW CHART



# BARIATRIC PATIENT ELECTIVE ADMISSION FLOW CHART



# SAMPLE MANAGEMENT PROCESS FOR A HOSPITAL ADMISSION AND DISCHARGE FOR A BARIATRIC PERSON

Patient > 158kg (350lbs) and/or with a BMI > 40. Flow Chart adapted from

