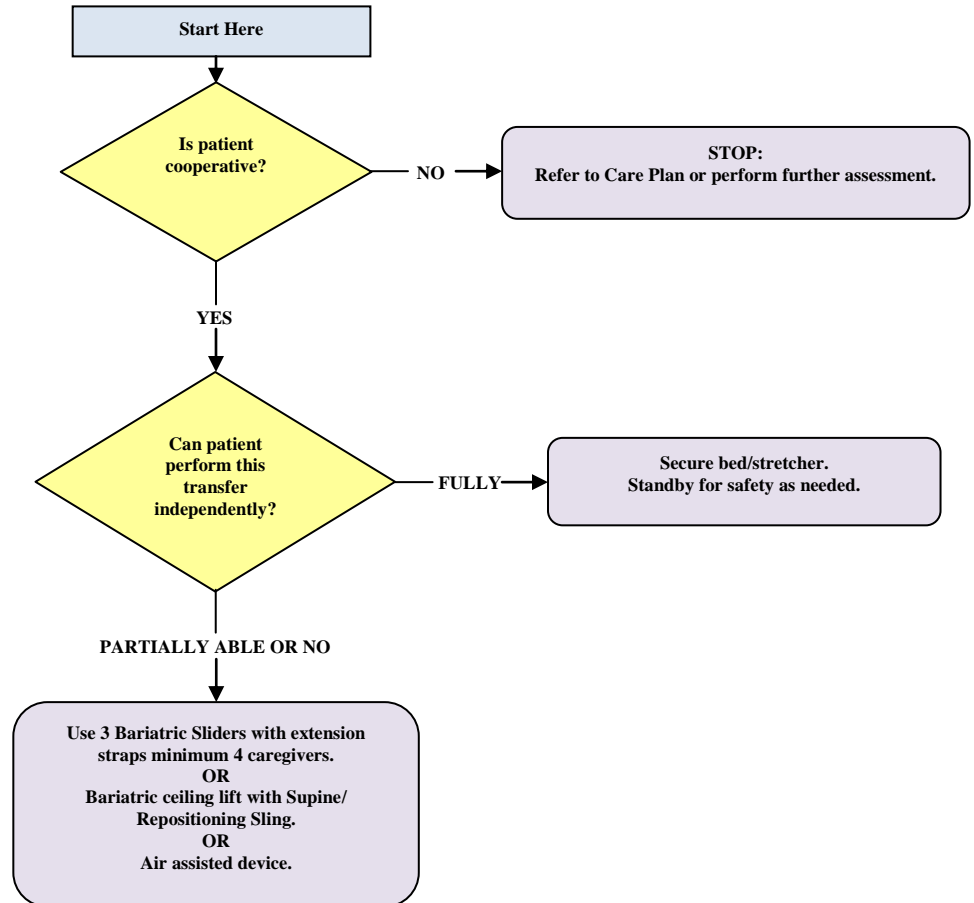




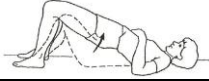
Bariatric Algorithm Lie to Lie: Lateral Transfer To & From: Bed/Stretcher



Maintain airway during lateral transfer by propping up head / shoulders (e.g. pillows).

Add an additional caregiver for every 100 pound increase in patient weight.

Assessment Actions
Patient attempts to roll from side to side in bed
Patient attempts to move legs over one at a time in the direction of the desired movement
Patient attempts to lift one or both hips off the bed (bridge position)



SWPs: Bariatric Lift
Hovermat
Bariatric Lateral Transfer