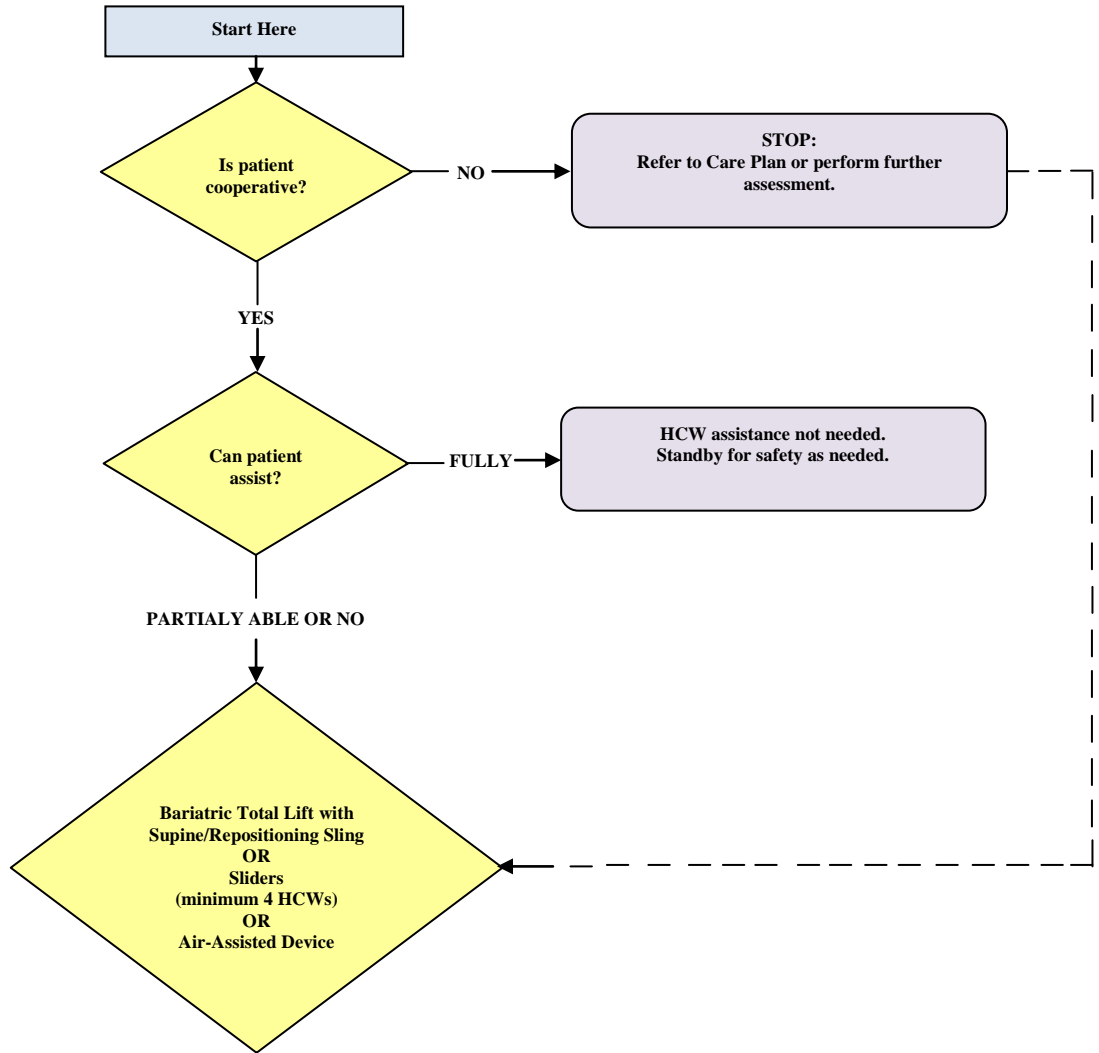




Bariatric Algorithm Chair Repositioning: Wheelchair, Chair or Dependency Chair



Maintain airway during lateral transfer by propping up head / shoulders (e.g. pillows).

Add an additional caregiver for every 100 pound increase in patient weight.

Assessment Actions

Test for ability to sit up in the chair unsupported. Test for ability to maintain balance side-to-side in sitting.



Patient attempts to straighten a bent elbow against your resistance.



SWPs: Total Lift (Ceiling or Floor Based)
Chair Repositioning with Sliders? (Safety?)