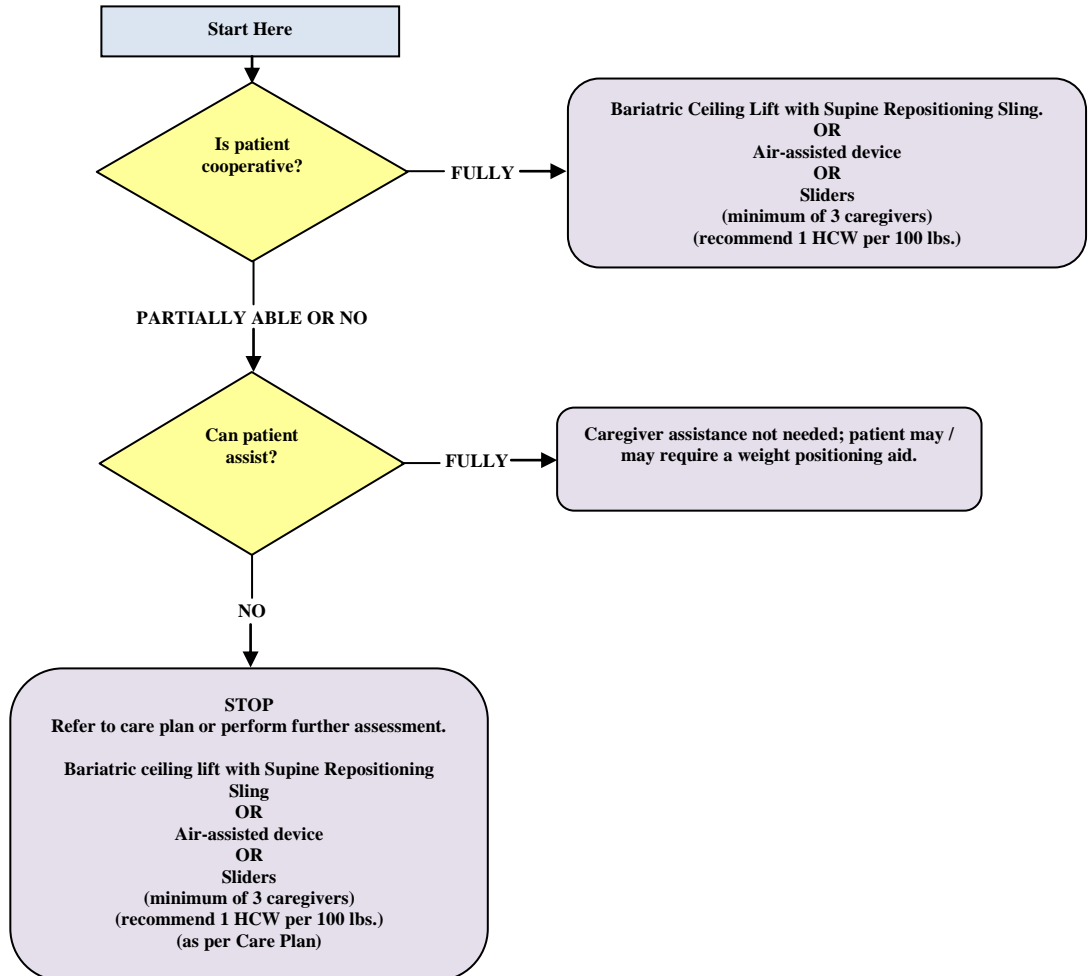
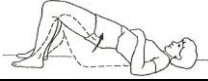




## Bariatric Algorithm Bed Repositioning: Side to Side, Up in Bed



<b>Assessment Actions</b>
Patient attempts to roll from side to side in bed
Patient attempts to move legs over one at a time in the direction of the desired movement
Patient attempts to lift one or both hips off the bed (bridge position)

SWPs: Bed Repositioning/Turn with Bariatric Ceiling Lift and Repositioning Sling

Bed Repositioning/Turn with Bariatric Sliders

Hovermat

Upper Body Strength