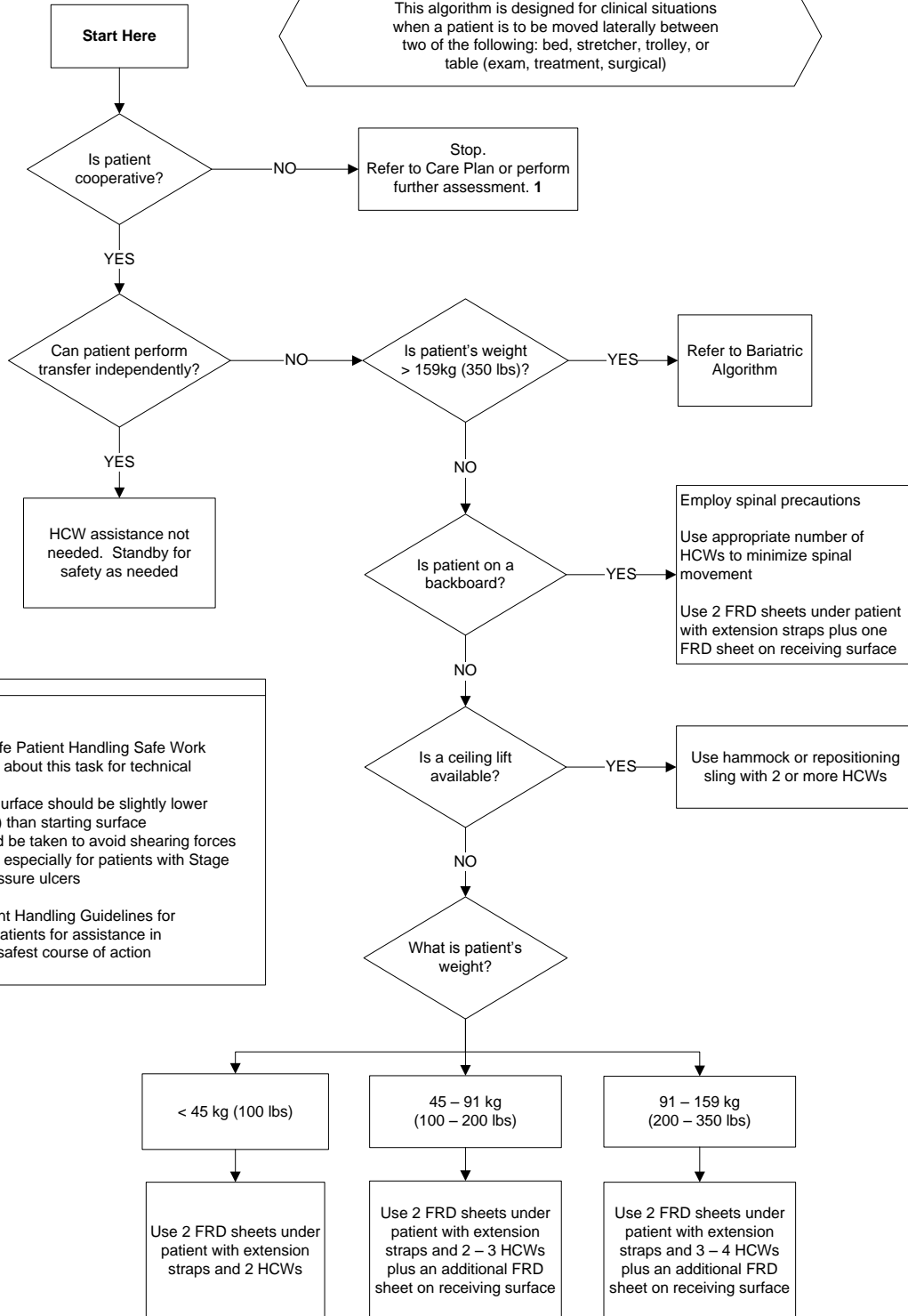


Algorithm 2 – Lie to Lie

(Lateral Transfer To and From: Bed to Stretcher, Trolley)

This algorithm is designed for clinical situations when a patient is to be moved laterally between two of the following: bed, stretcher, trolley, or table (exam, treatment, surgical)



SAFETY TIPS

- Refer to Safe Patient Handling Safe Work Procedures about this task for technical reference
- Receiving surface should be slightly lower (5cm / 2 in.) than starting surface
- Care should be taken to avoid shearing forces on the skin, especially for patients with Stage III or IV pressure ulcers

1. Refer to Patient Handling Guidelines for Uncooperative Patients for assistance in determining the safest course of action