



Purpose of the WRHA Hospital Infection Prevention and Control Manual

The purpose of this manual is to provide evidence based, best practice guidance and standardized infection prevention and control practices in the acute care areas of the following Winnipeg – Churchill Health Region facilities:

- Concordia Hospital
- Grace Hospital
- Health Sciences Centre
- Misericordia Health Centre
- Riverview Health Centre
- Seven Oaks General Hospital
- St. Boniface Hospital
- Victoria General Hospital
- Churchill Health Centre

This manual is not intended for the use of any other site or facility. For sites and facilities not listed above, this manual may be used as a reference only.

*Please be advised that printed versions of any document, or policies posted on external web pages, may not be the most current version of the document. Although we make every effort to ensure all information is accurate and complete, documents in this Manual are regularly under review and in the process of being amended and we cannot guarantee the accuracy of printed documents or documents on external web pages. At any given time the current version of any WRHA document will be deemed to apply. Users should verify any document is the current document before acting on it. For the most up to date version of any document in this Manual, please refer to Acute Care IP&C Manual, available at:
<http://www.wrha.mb.ca/extranet/ipc/manuals-acute.php>.*

For those who have printed versions of the WRHA Acute Care IP&C Manual, please ensure this DISCLAIMER is posted on the front of all WRHA Acute Care IP&C Manuals at your facility/site/program.



After Hours Coverage: Infection Prevention & Control Program

After Hours, Weekends and Statutory Holidays:

The Infection Control Professionals work Monday to Friday during the day. If you require Infection Prevention and Control services after hours, weekends or on statutory holidays, please:

Refer to the IP & C manual

For additional assistance regarding urgent IP & C issues, contact:

Dr. Evelyn Lo @ pager: 204-932-6538 for St. Boniface Hospital concerns

Dr. John Embil @ pager: 204-931-9538 for all other hospitals' concerns.

To ensure you have an up-to-date contact list, please refer to the Infection Prevention & Control (IP&C) website at:

<http://www.wrha.mb.ca/extranet/ipc/ContactUs.php>

Legend
CTL: Clinical Team Leader
ICP: Infection Control Professional
LTC: Long Term Care
ICA: Infection Control Assistant

Corporate Infection Prevention & Control Program Contact Information

Position	Name	Phone	Pager/Cell/Fax	Email
Program Director	Molly Blake	204-833-1742	C: 204-792-1837	mblake@wrha.mb.ca
Medical Director	Dr. John Embil	204-787-4654	P: 204-931-9538	jembil@hsc.mb.ca
Medical Director St Boniface Hospital	Dr. Evelyn Lo	204-237-2948	P: 204-932-6538	elo@sbgh.mb.ca
Infection Prevention & Control Specialist	Janice Briggs	204-833-1741	P: 204-932-0494	jbriggs@wrha.mb.ca
Epidemiologist	Myrna Dyck	204-833-1751	F: 204-940-2182	mdyck5@wrha.mb.ca
Community Infection Control Professional	Chantelle Riddle- Yarycky	204-833-1743	C: 204-470-8478	criddlearycky@wrha.mb.ca
TB Infection Control Professional	Frann Martins Da Ponte	204-833-1744	C: 204-793-9244	fmartinsdaponte@wrha.mb.ca
Special Projects Assistant	Denise Wilkins	n/a	P: 204-935-2506	dwilkins@wrha.mb.ca
Administrative Assistant	Dolores Sylvestre	204-833-1750	F: 204-940-2182	dsylvestre2@wrha.mb.ca
Secretary	Karen Olson Janice Fotheringham <i>(indefinite term)</i>	204-833-1752	F: 204-940-2182	kolson3@wrha.mb.ca jfotheringham@wrha.mb.ca



Site Specific Infection Prevention & Control Program Contact Information

Position	Name	Phone	Pager/Cell/Fax	Email
Concordia Hospital				
Community Team-ICP	Debbie McDonald	204-661-7214	P: 204-931-3398	DMcDonald@concordiahospital.mb.ca
Secretary	Deborah Hildebrandt	204-661-7455	F: 204-661-7441	dhildebrandt2@wrha.mb.ca
Deer Lodge Centre				
LTC Team-CTL	Dana Male	204-831-2121	P: 204-935-8547	dmale@deerlodge.mb.ca
LTC-Team-ICP	Kristina Eadie	204-831-2128	P: 204-935-2108	keadie@deerlodge.mb.ca
Secretary	Donna Dixon	204-831-2532	F: 204-831-2594	ddixon@wrha.mb.ca
Grace Hospital				
Community Team-ICP	Natalie Gibson	204-837-0478	P: 204-935-2503	ngibson@ggh.mb.ca
Community Team-ICP	Pam Mutcher	204-837-0823	P: 204-931-4102	pmutcher@ggh.mb.ca
Secretary	Donna Dixon	204-837-0267	F: 204-837-2568	ddixon@wrha.mb.ca
Health Sciences Centre				
HSC Team-CTL	Jen Tomlinson	204-787-4721	P: 204-787-2071 #2268	jtomlinson@hsc.mb.ca
HSC Team-ICP	Kristy O'Keefe <i>(term)</i>	204-787-1680	P: 204-935-2499	kokeefe@hsc.mb.ca
HSC Team-ICP	Karen Olekson	204-787-4690	P: 204-787-2071 #4690	kolekson@hsc.mb.ca
HSC Team-ICP	Lori Fleetwood	204-787-3012	P: 204-787-2071 #3617	lfleetwood@hsc.mb.ca
HSC Team-ICP	Sonja Musto	204-787-1679	P: 204-935-2485	smusto@hsc.mb.ca
HSC Team-ICA	Debbie Ormiston	204-787-4506	P: 204-787-2071 #0556	dormiston@hsc.mb.ca
HSC Team-ICA	Shyama Nanayakkara <i>(indefinite term)</i>	204-787-1620	n/a	snanayakkara2@hsc.mb.ca
Secretary	Melanie Race	204-787-1276	F: 204-787-1666	mrace@hsc.mb.ca
Misericordia Health Centre				
LTC Team-ICP	Melissa Zepp	204-788-8282	P: 204-935-8452	mzepp@whra.mb.ca
LTC Team-ICP	Davilyn Cairns	204-788-8284	P: 204-935-2498	dcairns@hsc.mb.ca
Secretary	Darlene Joss	204-788-8281	F: 204-783-2550	djoss@wrha.mb.ca



Position	Name	Phone	Pager/Cell/Fax	Email
Riverview Health Centre				
LTC Team-ICP	Fred Atkin	204-478-6172	P: 204-935-7555	fwatkin@wrha.mb.ca
LTC Team-ICP	Janice Karasevich	204-478-5728	P: 204-935-2519	jkarasevich@wrha.mb.ca
Secretary	Darlene Joss	204-478-5729	F: 204-475-1572	djoss@wrha.mb.ca
St Boniface Hospital				
SBH Team-CTL	Nina Williams	204-235-3462	P: 204-935-5693	nwilliam@sbgh.mb.ca
SBH Team-ICP	Janis Kennedy	204-237-2603	P: 204-935-5697	jknened@sbgh.mb.ca
SBH Team-ICP	Diane Robson	204-235-3081	P: 204-935-2601	drobson@sbgh.mb.ca
SBH Team-ICP	Diane Schuster	204-237-2996	P: 204-935-5662	dschuster@sbgh.mb.ca
SBH Team-ICA	Tammy Forbes	204-258-1352	P: 204-932-0611	tforbes@sbgh.mb.ca
Secretary	Monica Preteau	204-258-1231	F: 204-231-0174	mpreteau@sbgh.mb.ca
Seven Oaks General Hospital				
Community Team-CTL	Roxane Estrada	204-632-3247	P: 204-936-6122	restrada@sogh.mb.ca
Community Team-ICP	Nathan Wilson	204-632-3679	P: 204-932-0523	nwilson@sogh.mb.ca
Secretary	Debbie Hildebrandt	204-632-3682	F: 204-694-9446	dhildebrandt2@wrha.mb.ca
Victoria General Hospital				
Community Team-ICP	Karen Retha	204-477-3255	P: 204-931-3186	kretha@vgh.mb.ca
Secretary	Kristi Anaka	204-477-3503	F: 204-477-3492	kanaka@wrha.mb.ca



Acute Care Infection Prevention and Control Manual Document Development, Review & Stakeholders' Consultation Record

Document Name

Document Champion(s) – Name(s)

Record created on: Date

Step	Group or Committee	Date sent for Review	Response Date	Comments Received from	Date Approved
1	IP&C Manual Working Group/ alternate author (discuss at meeting)				
2	Hospital IP&C Working Group (forward electronically for 1 st review)				
	LTC Infection Control Professionals (per LTC IP&C Manager, forward electronically for 1 st review)				
3	IP&C Regional Committee** (forward electronically to members, requesting feedback from stakeholders they represent on the Regional IP&C Committee) ***Hospital IP&C Working Group members on this committee to review in step 4				
	Other applicable stakeholders (Insert here from lists on page 2)				
4	Hospital IP&C Working Group (forward electronically for 2nd review)				
5	Hospital IP&C Working Group (discuss at meeting for approval*)			Rationale for not incorporating any major or controversial suggestions submitted:	
6	IP&C Regional Committee** (discuss at meeting for approval*)			Rationale for not incorporating any major or controversial suggestions submitted:	
7	IP&C Program Team (for approval & document signature if applicable)				
8	WRHA IP&C Manual/Insite/Shared Drive / Document Placement				

*Comments may not be accepted after the deadline, including at the meeting where approval is being sought. Consider repeating completed steps if major changes are made.

REGIONAL IP&C COMMITTEE MEMBERS (*)Also Hospital Working Group members)	
Cancer Care Manitoba – Infection Control Services	***St. Boniface IP&C, ICP, CTL
CEO, St. Boniface Hospital	***Victoria General IP&C, ICP
Child Health IP&C, HSC	WRHA Allied Health Program
Clinical Microbiology – DSM	WRHA Capital Planning, Regional Director
***Concordia Hospital IP&C, ICP	WRHA Facility Management, Regional Director, DLC
***Deer Lodge Centre IP&C, ICP, CTL	WRHA Chief Nutrition & Food Services Officer
***Grace Hospital IP&C, ICP	***WRHA IP&C, Community ICP
***HSC IP&C, ICP, CTL	***WRHA IP&C Director, HSC
HSC Physiotherapy	***WRHA IP&C, Program Director
Integrated TB Services	***WRHA IP&C, IP&C Specialist
***Misericordia Health Centre IP&C, ICP	***WRHA IP&C, IP&C Epidemiologist
Nursing Leadership Council	***WRHA IP&C TB ICP
Pediatric IP&C, HSC	WRHA Medical Officer of Health
Public Health, Communicable Disease Coordinator	WRHA Occupational & Environmental Safety & Health
Regional Director, Medical Device Reprocessing	WRHA Pan Am Clinic
***Riverview Health Centre IP&C, ICP	WRHA Patient Safety Program
***Seven Oaks IP&C, ICP, CTL	WRHA LTC IP&C Program, Manager
***St. Boniface IP&C Medical Director	WRHA Surgery Program



From the lists below insert any relevant Stakeholders into Step 3 of the Table as indicated.
If relevant stakeholder is not listed below, add and follow directions above.

CLINICAL PROGRAMS	
Adult Mental Health	Oncology
Anesthesia	Operating Room Team per Perioperative Nurse Educator
Cardiac Sciences	Oral Health
Child & Adolescent Mental Health	Ophthalmology
Child Health	Palliative Care
Chronic Care per LTC CTL, LTC IP&C Manager	Long Term Care
Critical Care	Pharmacy
Diagnostic Imaging	Population and Public Health
Emergency	Primary Care
Family Medicine	Psychology
Genetics	Rehab/Geriatrics
Home Care	Surgeons Affected
Manitoba Renal Program	Surgery Program
Manitoba Telehealth	Women's Health
Medicine	

REGIONAL SERVICES/SUPPORT SERVICES	
Aboriginal Health Services	French Language Services
Aboriginal Human Resources	Housekeeping Services
Clinical Engineering	Laboratory Medicine
Community Health Services	Legal Services
eHealth (IT & Communications)	Recreation Services
Facilities Management per Regional Director, Facilities Management	Rehab Centre for Children
Family Services & Housing	Volunteer Services

REGIONAL SERVICES/COMMITTEES	
Admin Directors/CFO Joint Meeting	Nursing Leadership Council
Administrative Directors	LTC Executive Directors Council
Allied Health Leadership Council	Prop & Non Prop LTC/Directors of Care
Chief Financial Officers	Regional Educator Council
Chief Medical Officers	Regional Material Management
Community Operation Directors	Regional Ethics Council
Council of Urban CEOs	Urban Human Resources Council
Medical Executive	

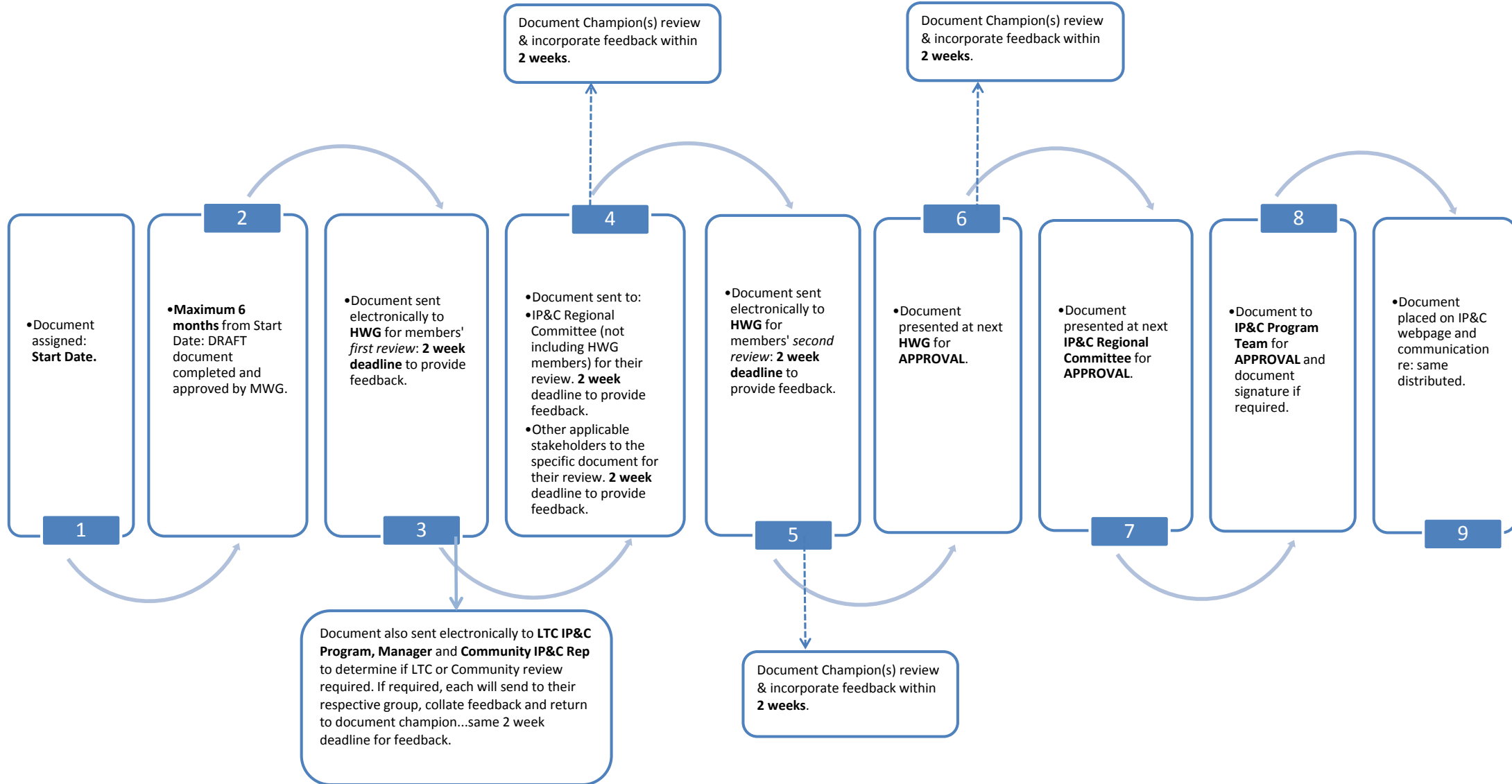
WRHA LTC IP&C PROGRAM, MANAGER CONTACTS	
Directors of Care	IP&C Professionals
Executive Directors	Long Term Care Team

COMMUNITY ICP CONTACTS	
Community Mental Health	Healthy Aging
Community OESH	Home Care
Community Staff & Clinical Education Manager	Pan Am
Primary Care/Family Medicine Clinics	Population Public Health

After document is approved, forward to the Community ICP and LTC IP&C Manager for consideration for inclusion/adaption for their respective IP&C Manuals.

Notes

Appendix 1: Critical Path





Appendix 2:

Excerpt from WRHA POLICY COMPLIANCE REVIEW REPORT 2012

All WRHA Policies must be reviewed within a one to five year timeframe.
(All documents within the Acute Care IP & C Manual must be reviewed within a one to five year timeframe).

Risk Management Risk Response Map

LIKELIHOOD	IMPACT				
	Insignificant	Minor	Moderate	Major	Extreme
Almost Certain	Moderate Risk	Moderate Risk	High Risk	Critical Risk	Critical Risk
Likely	Low Risk	Moderate Risk	High Risk	Critical Risk	Critical Risk
Possible	Low Risk	Moderate Risk	Moderate Risk	High Risk	High Risk
Unlikely	Low Risk	Low Risk	Moderate Risk	Moderate Risk	High Risk
Rare	Low Risk	Low Risk	Low Risk	Moderate Risk	Moderate Risk

GUIDELINES for determining an appropriate review date

Risk Level	Policy should be reviewed in -
Critical Risk	1 year
High Risk	2 years
Moderate Risk	3 years
Low Risk	4-5 years

For additional information: Click: Compliance Review REPORT (Reviewer's Template), which is available on Insite under: Policy Compliance Review.